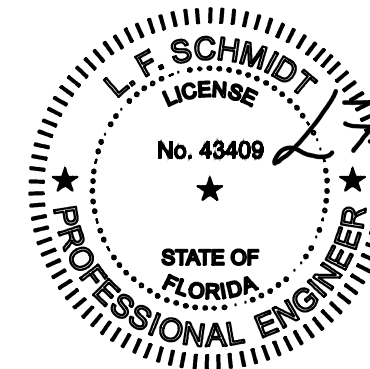
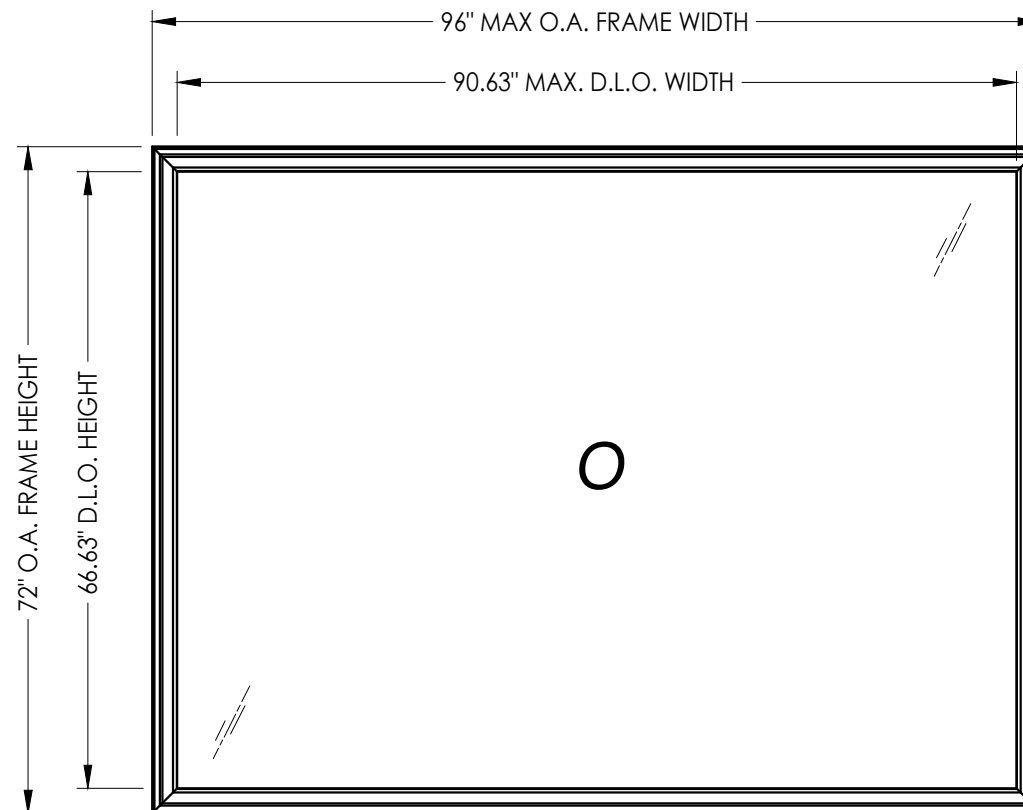


WINCORE™

WINDOWS & DOORS

250 Staunton Turnpike, Parkersburg, WV 26104

7700/9900 Series Vinyl Fixed Window "NON-IMPACT"



This item has been digitally signed and sealed by L. F. Schmidt, P.E. on the date adjacent to the seal. Printed copies of this document are not considered signed and sealed and the signature must be verified on any electronic copies.

THIS PRODUCT APPROVAL IS VALID ONLY FOR THE STATE OF FLORIDA

Documents Prepared By:
Lyndon F. Schmidt
P.E. No. 43409

RW
BUILDING CONSULTANTS, INC.
P.O. Box 230, Vairico, FL 33595
Phone No.: 813.659.9197
FBPE Registry No. 9813

GENERAL NOTES

- This product has been evaluated and is in compliance with the 8th Edition (2023) Florida Building Code (FBC) structural requirements excluding the "High Velocity Hurricane Zone" (HVHZ).
- Product anchors shall be as listed and spaced as shown on details. Anchor embedment to base material shall be beyond wall dressing or stucco.
- When used in areas requiring wind borne debris protection this product is required to be protected with an impact resistant covering that complies with FBC Sections 1609.1.2 & R301.2.1.2.
- For 2x stud framing construction, anchoring of these units shall be the same as that shown for 2x buck masonry construction.
- Site conditions that deviate from the details of this drawing require further engineering analysis by a licensed engineer or registered architect.

TABLE OF CONTENTS

SHEET#	DESCRIPTION
1	Typical elevations, design pressures and general notes
2	Horizontal cross sections
3	Buck anchoring
4	Frame anchoring
5	Bill of materials, components and glazing details

MAX. FRAME DIMENSION	MAX. D.L.O. DIMENSION	GLASS TYPE	DESIGN PRESSURE (PSF)	
			POSITIVE	NEGATIVE
60.0" X 48.0"	54.63" X 42.63"	G1, G4	+50.0	-50.0
53.0" X 53.0"	47.63" X 47.63"	G1, G4	+50.0	-50.0
72.0" X 50.0"	66.63" X 44.63"	G1, G4	+40.0	-40.0
84.0" X 40.0"	78.63" X 34.63"	G1, G4	+35.0	-35.0
60.0" X 60.0"	54.63" X 54.63"	G1, G4	+35.0	-35.0
84.0" X 63.0"	78.63" X 57.63"	G2, G5	+50.0	-50.0
76.0" X 72.0"	70.63" X 66.63"	G2, G5	+50.0	-50.0
84.0" X 66.0"	78.63" X 60.63"	G2, G5	+45.0	-45.0
78.0" X 72.0"	72.63" X 66.63"	G2, G5	+45.0	-45.0
96.0" X 72.0"	90.63" X 66.63"	G3, G6	+50.0	-50.0

PRODUCT: 7700/9900 SERIES

PART OR ASSEMBLY:
TYPICAL ELEVATION, DESIGN PRESSURES & GENERAL NOTES

NO.	DATE	REVISIONS
5	7/06/23	UPDATE TO 8TH ED. (2023) FBC
4	7/06/20	UPDATE TO 7TH ED. (2020) FBC
3	6/01/17	UPDATE TO 6TH ED. (2017) FBC
2	1/28/15	UPDATE TO 5TH ED. (2014) FBC
1	5/02/14	ADDED SIZES / GLAZING DETAILS

DATE: 4/30/13

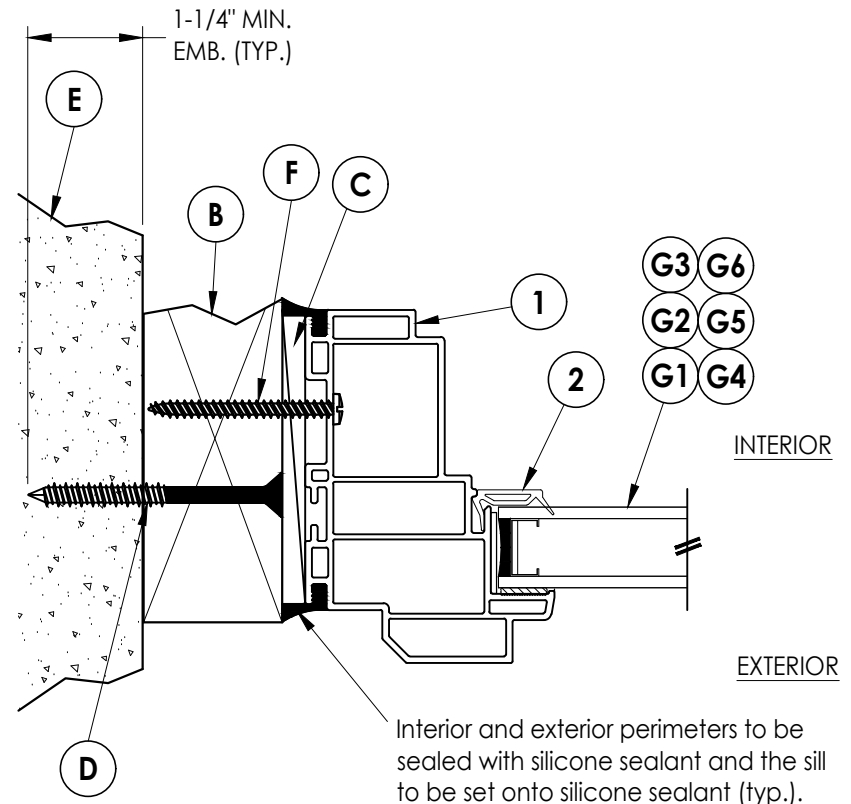
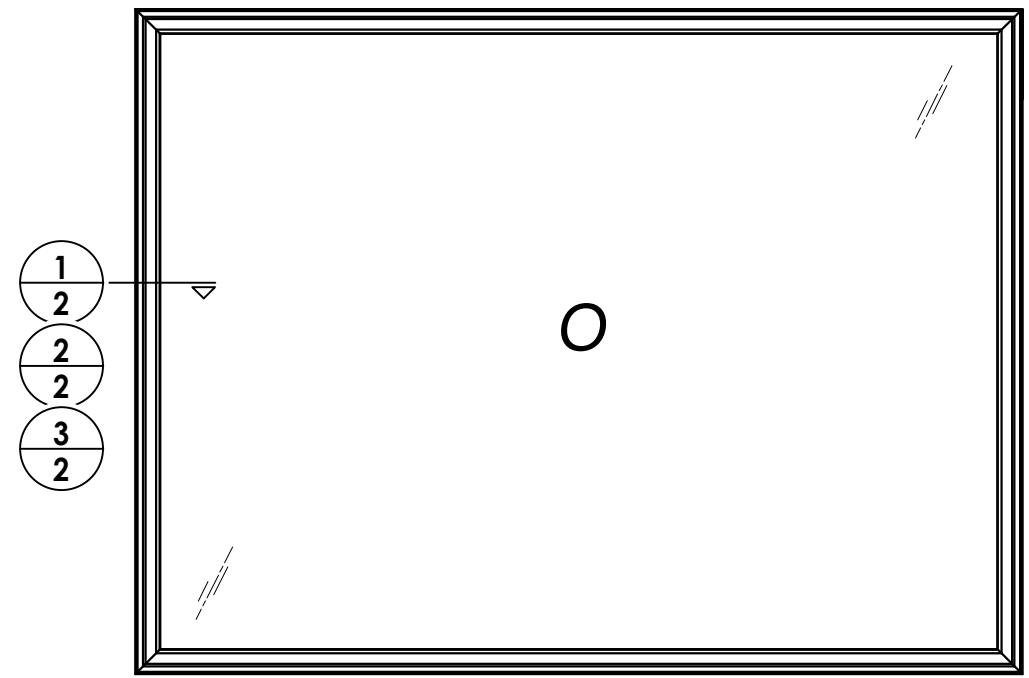
SCALE: N.T.S.

DWG. BY: JK

CHK. BY: LFS

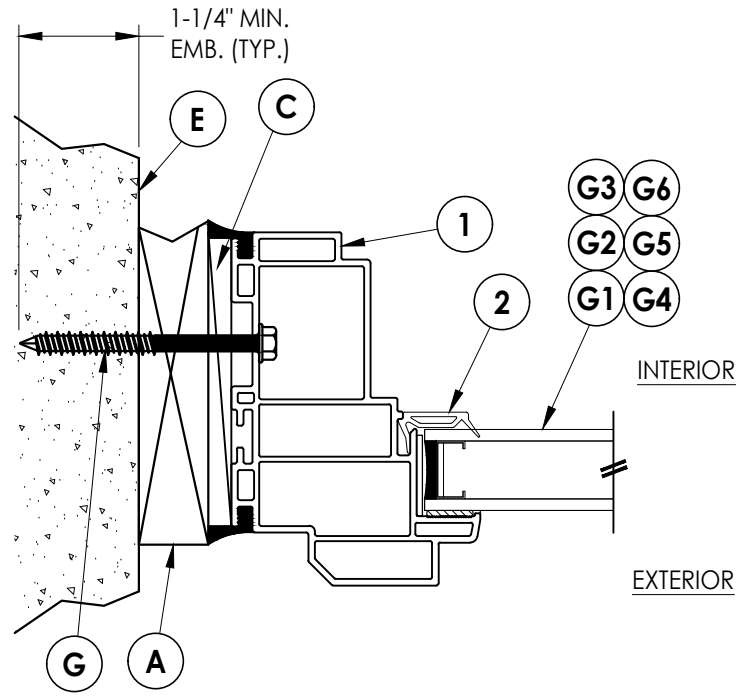
DRAWING NO.:
FL-15816.6

SHEET 1 OF 5

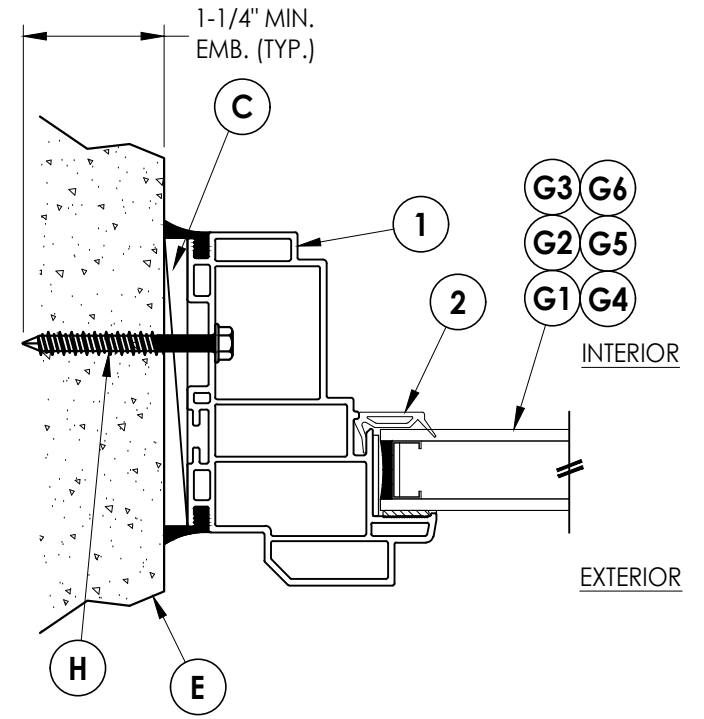


1 HORIZONTAL CROSS SECTION
2 Shown w/ 2X buck

Interior and exterior perimeters to be sealed with silicone sealant and the sill to be set onto silicone sealant (typ.).

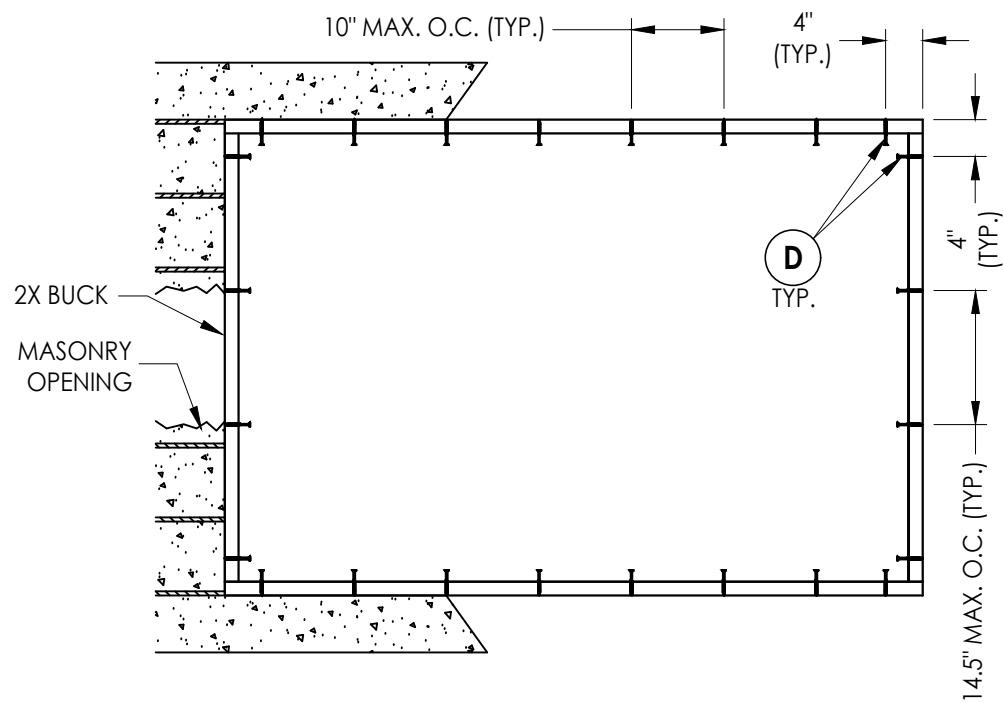


2 HORIZONTAL CROSS SECTION
2 Shown w/ 1X buck

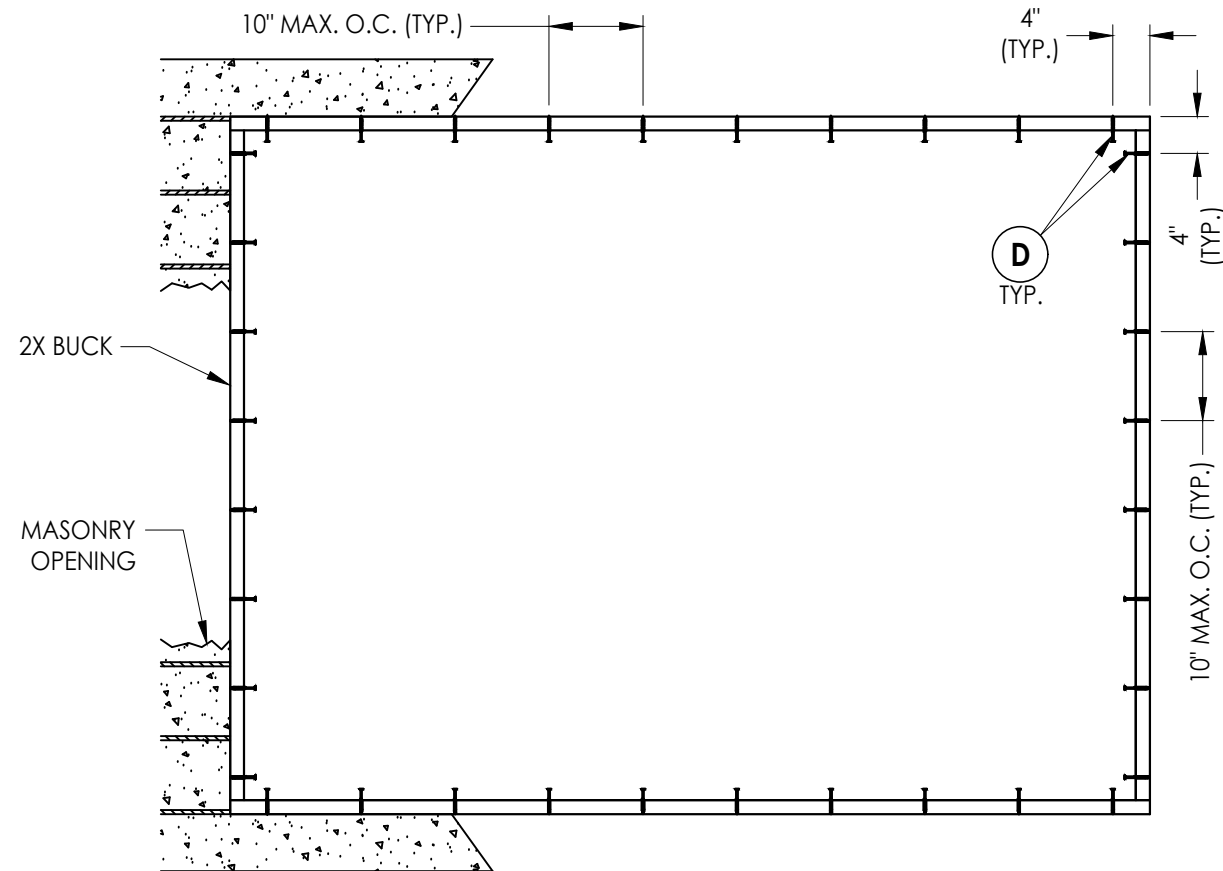


3 HORIZONTAL CROSS SECTION
2 Shown direct to masonry

Documents Prepared By: Lyndon F. Schmidt P.E. No. 43409		7700/9900 SERIES	
 BUILDING CONSULTANTS, INC. P.O. Box 230, Vairico, FL 33595 Phone No.: 813.659.9197 FBPE Registry No. 9813		PART OR ASSEMBLY: HORIZONTAL CROSS SECTIONS	
5	7/06/23	UPDATE TO 8TH ED. (2023)	FBC LFS
4	7/06/20	UPDATE TO 7TH ED. (2020)	FBC LFS
3	6/01/17	UPDATE TO 6TH ED. (2017)	FBC LFS
2	1/28/15	UPDATE TO 5TH ED. (2014)	FBC JK
1	5/02/14	ADDED SIZES / GLAZING DETAILS	JK
NO.	DATE	REVISIONS	
DATE: 4/30/13			
SCALE: N.T.S.			
DWG. BY: JK			
CHK. BY: LFS			
DRAWING NO.: FL-15816.6			
SHEET 2 OF 5			



BUCK ANCHORING
72" X 48" MAX



BUCK ANCHORING
96" X 72" MAX

CONCRETE ANCHOR NOTES:

1. Concrete anchor locations at the corners may be adjusted to maintain the min. edge distance to mortar joints.
2. Concrete anchor locations noted as "MAX. ON CENTER" must be adjusted to maintain the min. edge distance to mortar joints, additional concrete anchors may be required to ensure the "MAX. ON CENTER" dimension are not exceeded.
3. Concrete anchor table:

ANCHOR TYPE	ANCHOR SIZE	MIN. EMBEDMENT	MIN. CLEARANCE TO MASONRY EDGE	MIN. CLEARANCE TO ADJACENT ANCHOR
ITW TAPCON®	1/4"	1-1/4"	2"	4"
DeWALT ULTRACON®	1/4"	1-1/4"	1"	4"

WOOD SCREW INSTALLATION NOTES:

1. Maintain a minimum 5/8" edge distance, 1" end distance, & 1" o.c. spacing of wood screws to prevent the splitting of wood.

Documents Prepared By:
Lyndon F. Schmidt
P.E. No. 43409

RW BUILDING CONSULTANTS, INC.
P.O. Box 230, Valrico, FL 33595
Phone No.: 813.659.9197
FBPE Registry No. 9813

PRODUCT: 7700/9900 SERIES

PART OR ASSEMBLY: BUCK ANCHORING

NO.	DATE	REVISIONS
5	7/06/23	UPDATE TO 8TH ED. (2023) FBC LFS
4	7/06/20	UPDATE TO 7TH ED. (2020) FBC LFS
3	6/01/17	UPDATE TO 6TH ED. (2017) FBC LFS
2	1/28/15	UPDATE TO 5TH ED. (2014) FBC JK
1	5/02/14	ADDED SIZES / GLAZING DETAILS JK

DATE: 4/30/13

SCALE: N.T.S.

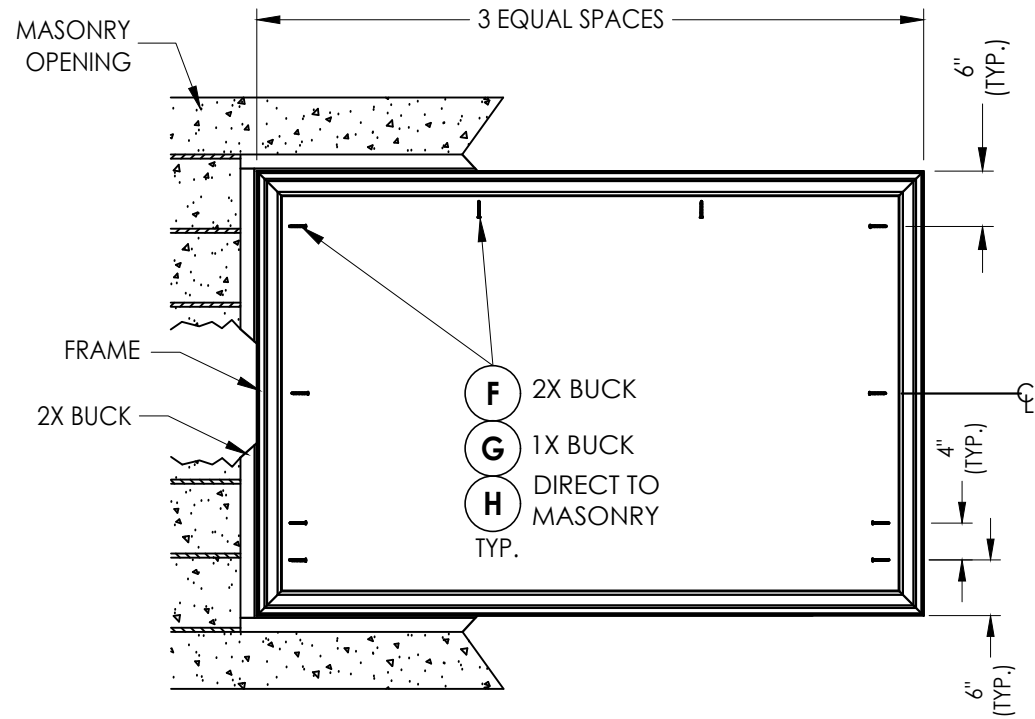
DWG. BY: JK

CHK. BY: LFS

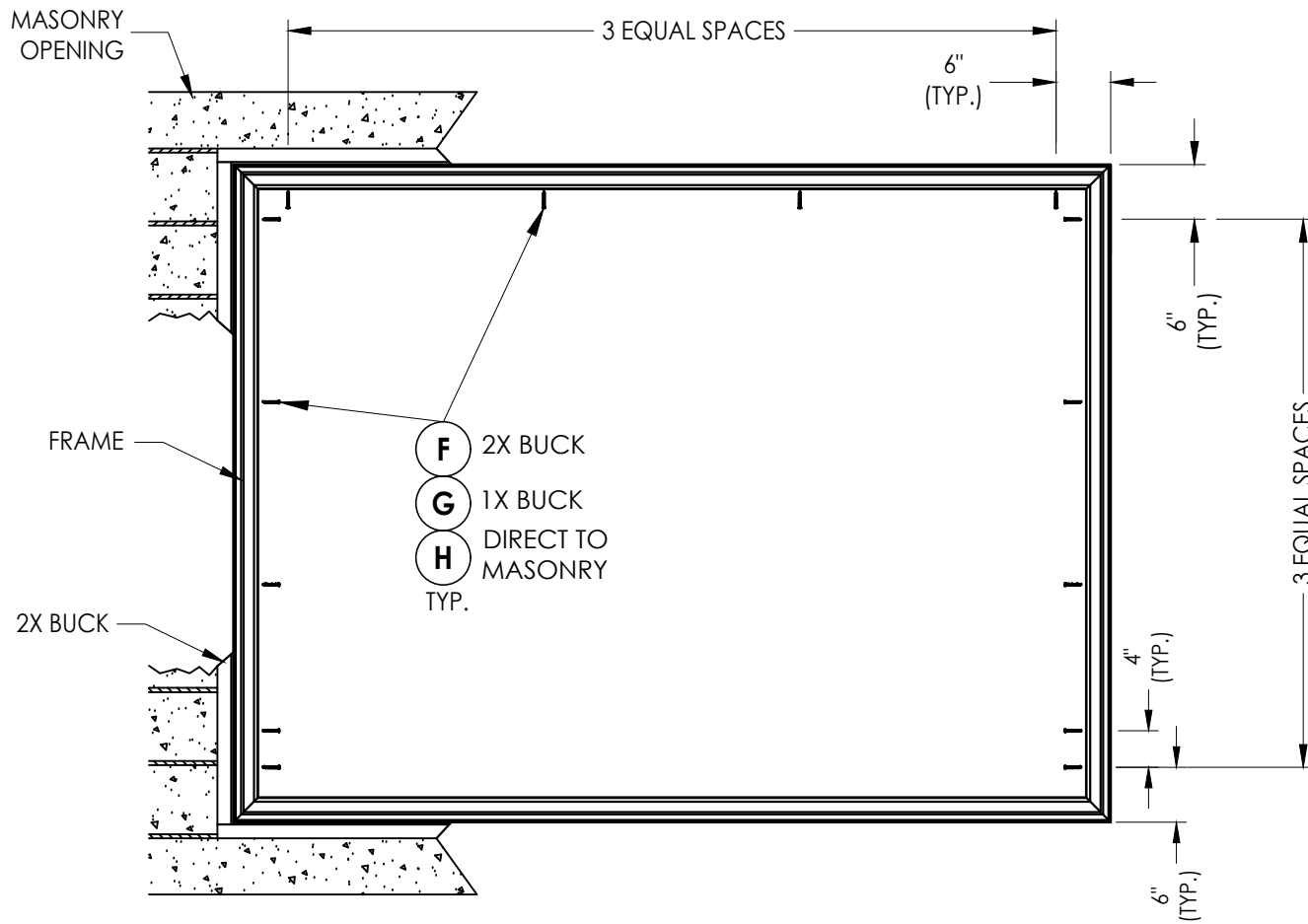
DRAWING NO.:

FL-15816.6

SHEET 3 OF 5



FRAME ANCHORING
72" X 48" MAX



FRAME ANCHORING
96" X 72" MAX

CONCRETE ANCHOR NOTES:

1. Concrete anchor locations at the corners may be adjusted to maintain the min. edge distance to mortar joints.
2. Concrete anchor locations noted as "MAX. ON CENTER" must be adjusted to maintain the min. edge distance to mortar joints, additional concrete anchors may be required to ensure the "MAX. ON CENTER" dimension are not exceeded.
3. Concrete anchor table:

ANCHOR TYPE	ANCHOR SIZE	MIN. EMBEDMENT	MIN. CLEARANCE TO MASONRY EDGE	MIN. CLEARANCE TO ADJACENT ANCHOR
ITW TAPCON®	1/4"	1-1/4"	2"	4"
DeWALT ULTRACON®	1/4"	1-1/4"	1"	4"

WOOD SCREW INSTALLATION NOTES:

1. Maintain a minimum 5/8" edge distance, 1" end distance, & 1" o.c. spacing of wood screws to prevent the splitting of wood.

Documents Prepared By:
Lyndon F. Schmidt
P.E. No. 43409

RW BUILDING CONSULTANTS, INC.
P.O. Box 230, Valrico, FL 33595
Phone No.: 813.659.9197
FBPE Registry No. 9813

PRODUCT: 7700/9900 SERIES

PART OR ASSEMBLY:
FRAME ANCHORING

NO.	DATE	REVISIONS			
		BY	JK	JK	LFS
5	7/06/23	UPDATE TO 8TH ED. (2023)	FBC	LFS	
4	7/06/20	UPDATE TO 7TH ED. (2020)	FBC	LFS	
3	6/01/17	UPDATE TO 6TH ED. (2017)	FBC	LFS	
2	1/28/15	UPDATE TO 5TH ED. (2014)	FBC	JK	
1	5/02/14	ADDED SIZES / GLAZING DETAILS		JK	

DATE: 4/30/13

SCALE: N.T.S.

DWG. BY: JK

CHK. BY: LFS

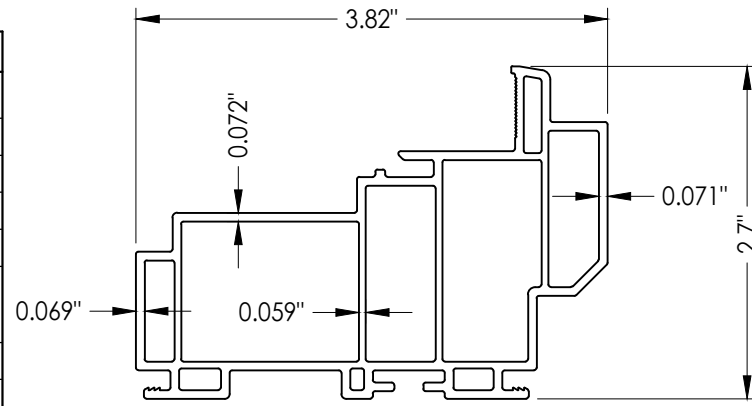
DRAWING NO.:

FL-15816.6

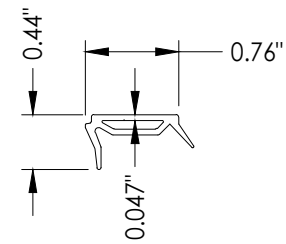
SHEET 4 OF 5

BILL OF MATERIALS		
ITEM #	DESCRIPTION	MATERIAL
A	1X BUCK (SG >= 0.42)	WOOD
B	2X BUCK (SG >= 0.42)	WOOD
C	1/4" MAX. SHIM SPACE	-
D	1/4" X 2-3/4" PFH DeWALT OR ITW CONCRETE SCREW	STEEL
E	MASONRY - 3,000 PSI MIN. CONCRETE CONFORMING TO ACI 301 OR HOLLOW BLOCK CONFORMING TO ASTM C90	CONCRETE
F	#10 X 2" PPH WOOD SCREW (1-7/16" MIN. EMBEDMENT)	STEEL
G	1/4" X 2-3/4" HWH DeWALT OR ITW CONCRETE SCREW	STEEL
H	1/4" X 2-1/4" HWH DeWALT OR ITW CONCRETE SCREW	STEEL
1	FRAME (PI7701WH)*	PVC
2	1" GLAZING BEAD (BV79WH)*	PVC

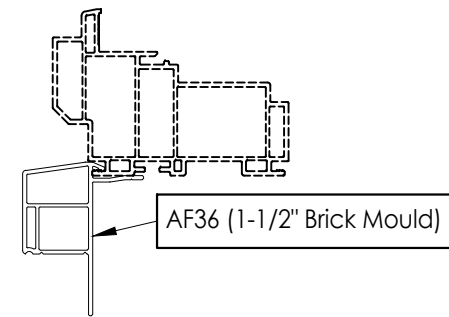
* THE APPROVED WHITE RIGID PVC EXTRUSIONS FOR WINDOWS ARE TO BE PRODUCED BY EXTRUDERS LICENSEES IN "AAMA CERTIFICATION PROGRAMS FOR RIGID PVC EXTRUSIONS".



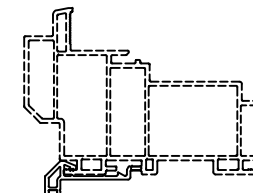
1 FRAME



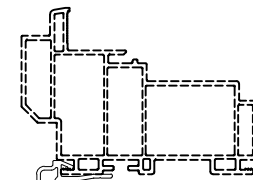
2 GLAZING BEAD



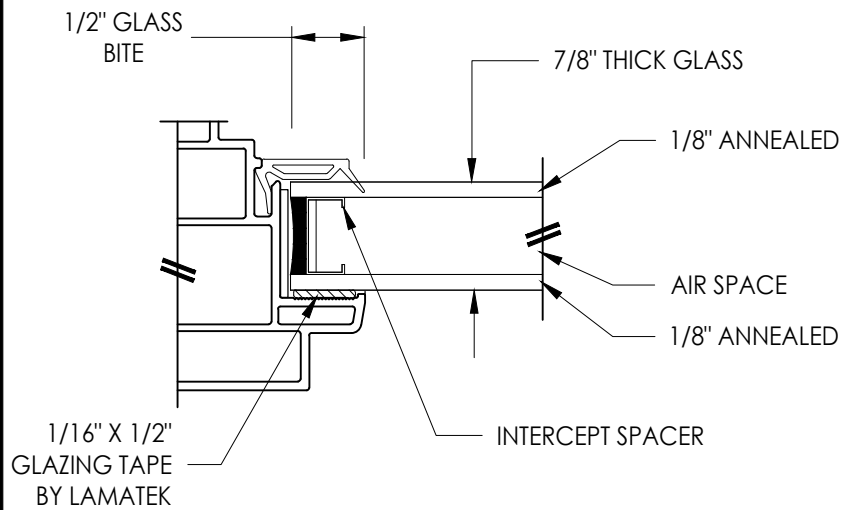
OPTIONAL COSMETIC FLANGES



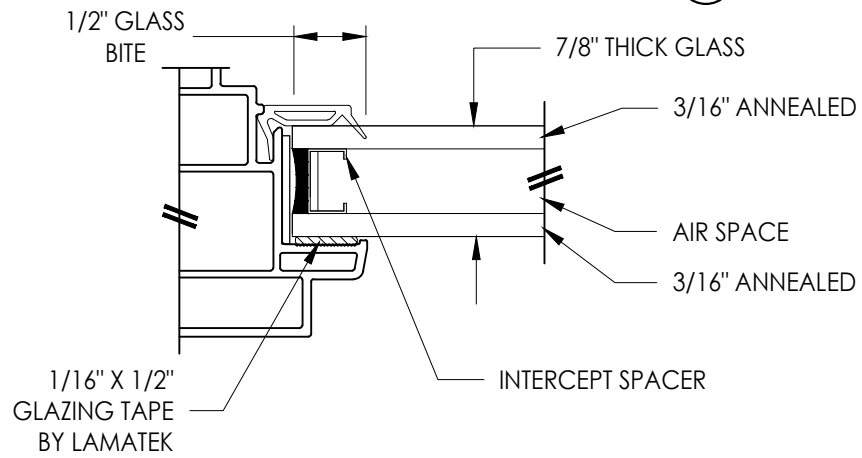
AF59 (Masonry Flange 1)



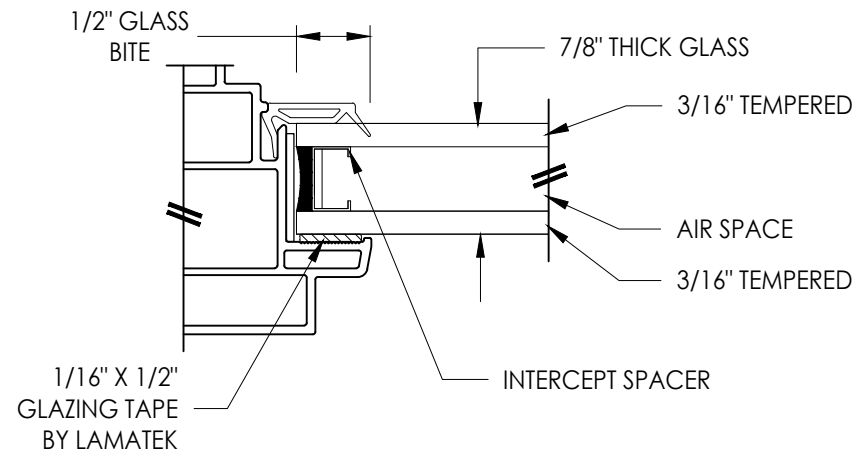
V672 (Masonry Flange 2)



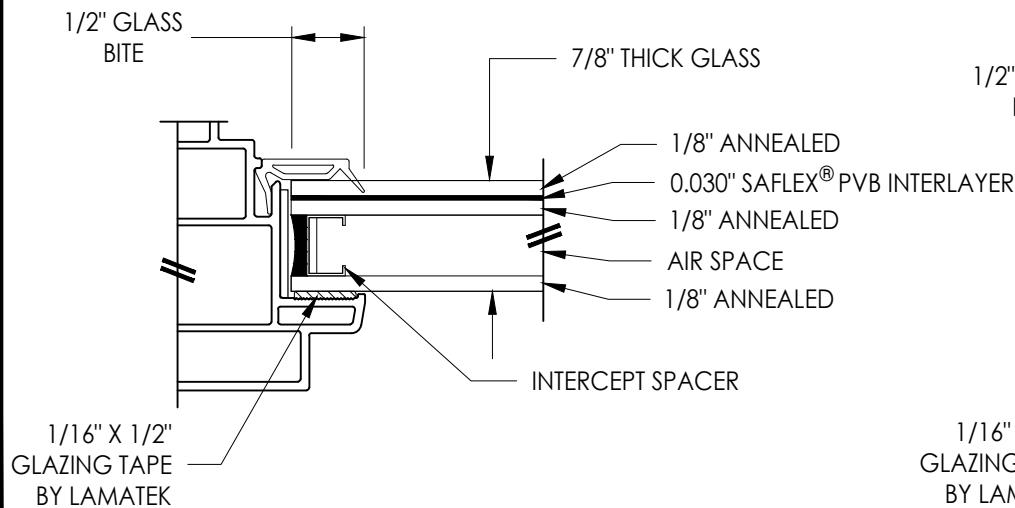
G1 GLAZING DETAIL
(See General Note 3, Sheet 1)



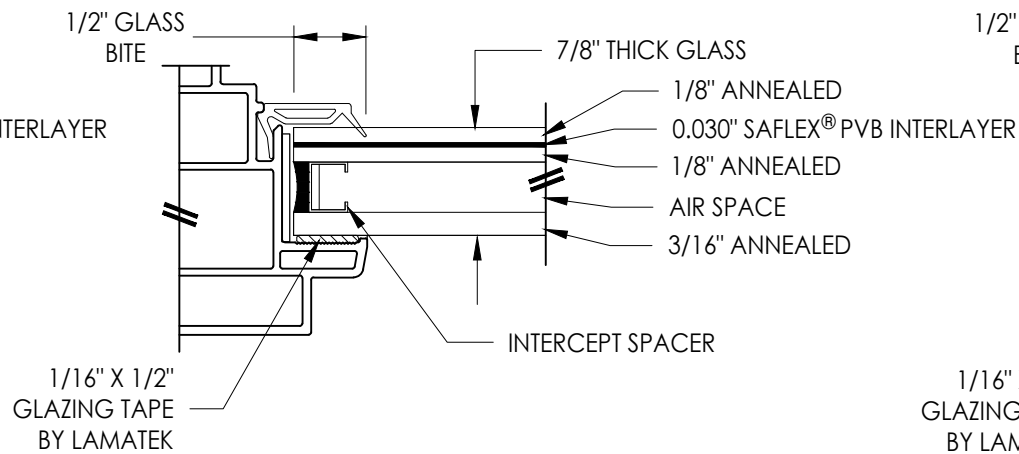
G2 GLAZING DETAIL
(See General Note 3, Sheet 1)



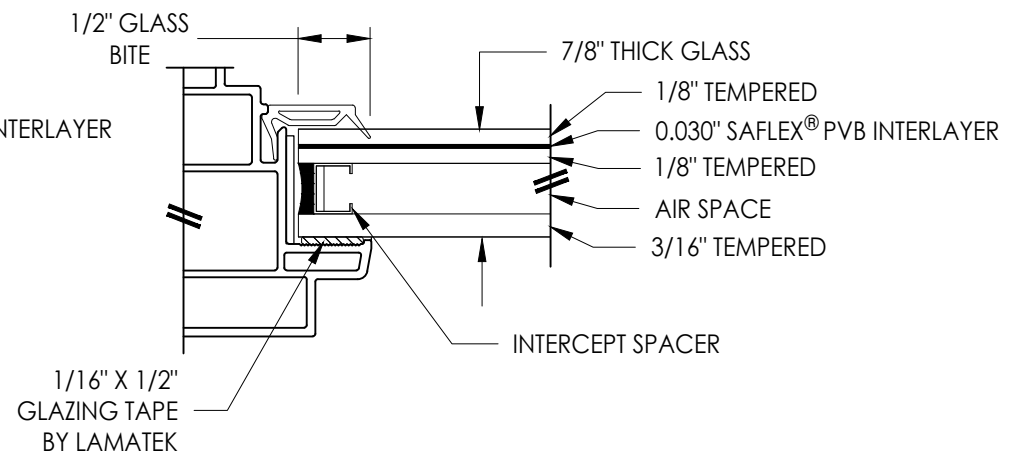
G3 GLAZING DETAIL
(See General Note 3, Sheet 1)



G4 GLAZING DETAIL
(See General Note 3, Sheet 1)



G5 GLAZING DETAIL
(See General Note 3, Sheet 1)



G6 GLAZING DETAIL
(See General Note 3, Sheet 1)

Documents Prepared By:
Lyndon F. Schmidt
P.E. No. 43409

RW BUILDING CONSULTANTS, INC.
P.O. Box 230, Vairico, FL 33595
Phone No.: 813.659.9197
FBPE Registry No. 9813

PRODUCT: 7700/9900 SERIES

PART OR ASSEMBLY:
BILL OF MATERIALS, COMPONENTS
AND GLAZING DETAIL

NO.	DATE	ADDED SIZES / GLAZING DETAILS	JK	JK	BY
5	7/06/23	UPDATE TO 8TH ED. (2023)	FBC	LFS	
4	7/06/20	UPDATE TO 7TH ED. (2020)	FBC	LFS	
3	6/01/17	UPDATE TO 6TH ED. (2017)	FBC	LFS	
2	1/28/15	UPDATE TO 5TH ED. (2014)	FBC	JK	
1	5/02/14	ADDED SIZES / GLAZING DETAILS	FBC	JK	

REVISIONS

DATE: 4/30/13
SCALE: N.T.S.
DWG. BY: JK
CHK. BY: LFS
DRAWING NO.: FL-15816.6
SHEET 5 OF 5